



[Caron Connections :: Issue #55 :: Printer friendly version](#)



Send this issue of Caron Connections to a friend

Enter your friend's e-mail address:

We will not share or keep this e-mail address.

[Share this issue of Caron Connections](#)

## What's New @ CARON®

## What's New @ naturally caron.com

Just when you thought summer fun was nearly over, we've come up with a darling design that will take your tween from summer into early fall with a bit of whimsy and a lot of style. Our [Going in Circles Top](#) in lustrous [Simply Soft®](#) features a unique neckline of joined circles and a wide-ribbed body plus very in-vogue elbow-length sleeves. Perfect for the first day back to school.



to school.

We love tunics! Put our [Tunic Vest](#) crocheted in [Simply Soft® Heather](#) over a long-sleeved tee and finish off the look with leggings or skinny jeans. It's magic! The tunic is flattering to every body shape and gives you maximum fashion flexibility, too.



[Simply Soft® Heathers are 20% off at ShopCaron.com now through Aug 15!](#)

### Send us a Tweet!

We are tweeting all the time! Follow [YarnTech](#) and [YarnVP](#) and [knit\\_crochetdir](#) have all the latest news about Caron and NaturallyCaron.com yarns.

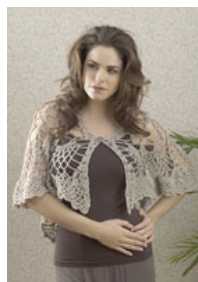


The granny square has been a familiar friend to crocheters for a long time. In the hands of a talented designer like Treva McCain, our dear friend the granny square has received a bit of a makeover. Her charming [Woodcliff Throw](#) uses a variety of shapes and sizes of granny squares and rectangles to create a stylish vintage look in our bamboo-blend [Spa](#) yarn. Edged with a retro zigzag border, this throw will become a family favorite for years to come.

[View the online fashion show for Woodcliff](#)

[Click here for free instructions for Woodcliff](#)

[NaturallyCaron.com Spa is 20% off now through Aug 15!](#)



The pineapple motif is a trusted favorite of crocheters, too. Designer Karen Drouin gives it new life in our [Aphrodite Shawl](#) stitched in [NaturallyCaron.com Spa](#) yarn. A split-circle forms the basis of the shawl, with the lacy pineapple stitches making it light and classic at the same time. But the soft hand and texture of the bamboo fiber in Spa updates the drape and the feel of project for vintage fashion flair.

[View the online fashion show for Aphrodite](#)

[Click here for free instructions for Aphrodite](#)

[NaturallyCaron.com Spa is 20% off now through Aug 15!](#)

### New in the Designer Studio

Our [Designer Studio](#) is a big hit with our website visitors! Have you dropped by yet? This month, you'll meet [Margret Willson](#), [Kristin Omdahl](#) and [Marilyn Losee](#). Learn what influences their design process, where they find inspiration and what's on their needles and hooks now.



shop **CARON**.com | **SHOP HAMPTON ART.COM**



Buy all your favorite Caron products online

[Yarns](#) || [Free Projects](#) || [Where to Buy](#) || [Links](#) || [Learning](#) || [Contact Us](#) || [Caron Connections](#) || [News](#) || [Latch Hook](#) || [Visit Bond America online](#)

©2008 Caron International