



CARON[®]
soften your world

Subscribe to Caron Connections, our free e-newsletter.

Enter your e-mail address

subscribe

[yarn](#) [free projects](#) [where to buy](#) [links](#) [learning](#) [contact us](#) [caron connections](#) [news](#) [latch hook](#)

Caron Yarns

Simply Soft[®]

Simply Soft[®] Baby **NEW**

Simply Soft[®] Brites

Simply Soft[®] Heather

NEW

Simply Soft[®] Quick

Simply Soft[®] Tweed

Simply Soft[®] Shadows

Bliss[®]

Craft & Rug Yarn **NEW**

Felt-It

Fling

Glimmer

Natura[®]

One Pound

Perfect Match[®]

Pizazz[®]

Wintuk[®]

Caron Latch Hook Kits

Shaggy

Caron[®] Classics

Natura[®]

WonderArt[®]

Krafty Kids[™]

Christmas designs



Buy all your favorite
Caron products online

Fancy Ruffle Purse

with

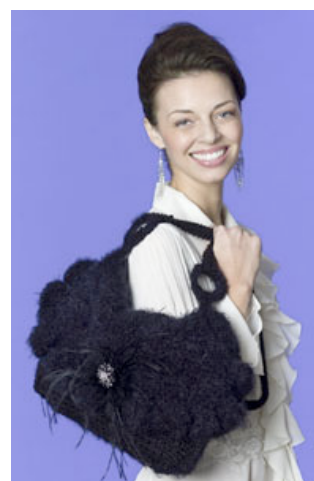
BLISS

and

SIMPLY SOFT

designed by Kim Rutledge

TECHNIQUE USED: Crochet



click to enlarge image

 **Printer Friendly PDF**

FINISHED MEASUREMENTS:

Purse measures approximately 14"/35.5cm wide x 8"/20.5cm high, with flap folded down

MATERIALS

Caron International's Bliss (60% acrylic, 40% nylon; 1.76 oz/50 g, 82 yds/75 m ball): 2 balls A.

Caron International's Simply Soft (100% acrylic; 6 oz/170 g, 315 yds/288 m skein): 1 skein B.

Shown in: #0013 Black (A); #9727 Black (A)

One size US F/5 (3.75 mm) crochet hook, or size to obtain gauge

One size US H/8 (5 mm) crochet hook, or size to obtain gauge

2 plastic rings—2"/5 cm diameter

Yarn needle

GAUGE

In pattern stitch, using US size F-5 (3.75 mm) hook and B, 22 sts (8 esc + 7 ch-2 sp) and 13 rows = 4"/10 cm

STITCHES USED

Chain (ch), half double crochet (hdc), reverse single crochet (rev sc),

single crochet (sc), slip stitch (slip st), treble crochet (tr)

SPECIAL TERM

esc; Extended single crochet – Insert hook in indicated st, yo, pull up a loop, yo, draw through one loop on hook, yo, draw through remaining loops on hook.

sc2tog: Single crochet 2 together – [Insert hook in next st and pull up a loop] twice, yarn over and draw through 3 loops on hook.

FRONT AND BACK (make 2)

Beginning at lower edge of purse, with smaller hook and B, ch 53.

Row 1 (RS): Esc in 8th ch from hook (beginning ch counts as esc, ch 2), *ch 2, skip 2 ch, esc in next ch; repeat from * across, turn—16 ch-2 spaces and 17 esc.

Row 2 (increase): Ch 6, esc in first esc, ch 2, skip next ch-2 space, *esc in next esc, ch 2, skip next ch-2 space; repeat from * to last st, (esc, ch 2, tr) in last st, turn.

Rows 3–6 (increase): Ch 6, esc in first tr, *ch 2, skip next ch-2 space, esc in next esc; repeat from * across, ch 2, (esc, ch 2, tr) in 4th ch of turning ch, turn.

Row 7: Ch 4 (counts as esc, ch 2 here and throughout), skip next ch-2 space, esc in next esc, *ch 2, skip next ch-2 space, esc in next esc; repeat from * across, ch 2, esc in 4th ch of turning ch, turn—26 ch-2 spaces and 27 esc.

Rows 8–20: Repeat Row 7.

Row 21 (decrease): Ch 1, slip st in first 4 sts, ch 4, skip next ch-2 space, esc in next esc, *ch 2, skip next ch-2 space, esc in next esc; repeat from * across to last ch-2 space; leave remaining sts unworked, turn—24 ch-2 spaces and 25 esc.

Row 22: Ch 4 (counts as esc, ch 2 here and throughout), skip next ch-2 space, esc in next esc, *ch 2, skip next ch-2 space, esc in next esc; repeat from * across, ch 2, esc in 4th ch of turning ch, turn.

Rows 23–26: Repeat last 2 rows twice, turn—20 ch-2 spaces and 21 esc. Do not fasten off.

Edging

Round 1: Ch 4, skip next ch-2 space, esc in next esc, *ch 2, skip next ch-2 space, esc in next esc; repeat from * across, ch 2, 2 esc in 4th ch of turning ch; working along diagonal side edge of piece, *ch 3, esc in end of next row (working esc in top of "corner" of the end of the row); repeat from * across diagonal side edge; working along straight side edge of piece, **ch 3, skip end of next row, esc in end of next row; repeat from ** across straight side edge; working along diagonal side edge of piece, *ch 3, esc in end of next row (working esc in top of "corner" of the end of the row); repeat from * across diagonal side edge; working along opposite side of foundation ch, ***ch 3, skip next 2 ch, esc in next esc; repeat from *** across opposite side of foundation ch; continue in this manner along next diagonal edge, straight side edge, and final diagonal edge; join with slip st in second ch of beginning ch-4. Fasten off.

STRAP

With smaller hook and B, make a chain approximately 34"/86.5 cm long.

Row 1: Working in back loops only, hdc in 3rd ch from hook and in each remaining ch to last ch, 3 hdc in last ch; pivot to work along opposite side of foundation ch (in front loops only), hdc in each ch to last ch, work 2 hdc in last ch; join with slip st in first hdc, do not turn.

Row 2: Ch 2, rev sc in each sc around; join with slip st in first st. Fasten off.

FINISHING

With WS of front and back together, use larger hook and 2 strands of A held together, join yarn with slip st in top right corner.

Row 1: Working through both thicknesses, work (sc, ch 1) evenly spaced around to top left corner, working (sc, ch 1, sc) in each corner; ch 1, sl st in same st as last sc worked. Fasten off.

Flap

With RS facing and larger hook, join one strand of A with sc in top right corner of back.

Row 1: *Ch 1, sc in next ch-2 space; repeat from * across, turn.

Row 2: Ch 1, sc in first sc, *sc in next ch-1 space, sc in next sc; repeat from * across, turn.

Row 3: Ch 1, sc in each sc across, turn.

Rows 4–7 (increase): Ch 1, 2 sc in first sc, sc in each sc to last sc, 2 sc in last sc, turn.

Rows 8–14: Ch 1, sc in each sc across, turn. Place markers in both ends of Row 8 for ruffle placement.

Rows 15–19 (decrease): Ch 1, *sc2tog, sc in each sc to last 2 sc, sc2tog, turn.

Fasten off.

Flap Ruffle

With RS facing and larger hook, join one strand of A with slip st in end of Row 8 (marked).

Row 1: Ch 1, sc evenly spaced around edge of flap to opposite end of Row 8 (marked), working 2 sc in each corner, turn.

Row 2: Ch 1, sc in each sc across, turn.

Rows 3 and 4: Ch 1, *sc in next sc, 2 sc in next sc; repeat from * across, turn. **Note:** Work an additional sc if needed to reach end of row.

Row 5: Ch 1, sc in each sc across; slip st in edge of Row 1 (above), turn.

Row 6: Ch 1, *sc in next sc, ch 1, skip next sc; repeat from * across; slip st in edge of Row 1 (above). Fasten off.

Attach Strap

With larger hook and 2 strands of A held together, work sc around both plastic rings. Work enough sc to cover rings completely. Fasten off leaving a long tail for sewing. Sew one ring to top of each side of purse. Thread one end of strap through each ring, and sew end to strap.

Using yarn needle, weave in all ends.

[|| Yarns ||](#) [Free Projects ||](#) [Where to Buy ||](#) [Links ||](#) [Learning ||](#) [Contact Us ||](#) [Caron Connections ||](#) [News ||](#)
[Latch Hook ||](#)

[Visit Bond America online](#)

©2007 Caron International