



CARON[®]
soften your world

Subscribe to Caron Connections, our free e-newsletter.

Enter your e-mail address

subscribe

[yarn](#) [free projects](#) [where to buy](#) [links](#) [learning](#) [contact us](#) [caron connections](#) [news](#) [latch hook](#)

Caron Yarns

Simply Soft[®]

Simply Soft[®] Baby

Simply Soft[®] Brites

Simply Soft[®] Eco **NEW**

Simply Soft[®] Heather

Simply Soft[®] Paints

Simply Soft[®] Quick

Simply Soft[®] Tweed

Simply Soft[®] Shadows

Bliss

Craft & Rug Yarn

Natura[®]

One Pound

Wintuk[®]



Check out our newest yarns!

Caron Latch Hook Kits

The Simpsons[™] **NEW**

Shaggy

Caron[®] Classics

Natura[®]

WonderArt[®]

Krafty Kids[™]

Christmas designs



Buy all your favorite
Caron products online

Checked Hat

with
SIMPLY SOFT[®]
and
SIMPLY SOFT[®]
Brites



[click to enlarge image](#)

[chart](#)

[Printer Friendly PDF](#)

designed by Liz Adams

TECHNIQUE USED: Knit



SIZES

Small (Medium, Large)

To fit: Toddler (Child, Adult)

FINISHED MEASUREMENTS

Hat measures approximately 15 1/2 (17 3/4, 20) " / 39 (45, 51) cm in circumference

MATERIALS

Caron International's Simply Soft (100% acrylic): 6oz/ 170 g

Shown in: #9727 Black (MC)

Caron International's Simply Soft Brites (100% acrylic) 6 oz/170 g; each 3 colors

Shown in: #9604 Watermelon (A); #9608 Blue Mint (B); #9610 Grape (C)

One circular needle size US 7 (4.5 mm), 16" long, or size to obtain gauge

One set of double pointed needles (dpn) size US 7 (4.5 mm)

Stitch markers

Yarn Needle

Row counter (optional)

Pompon Maker or piece of cardboard (optional)

GAUGE

In Stockinette stitch, 18 sts and 24 rows = 4"/10 cm

SPECIAL TECHNIQUES

Fair Isle (Stranded) Technique: Carry color not in use loosely across WS of work.

STITCHES USED

Stockinette stitch (St st): Knit every round.

NOTE

Hat is worked in-the-round; begin with circular needle, change to double pointed needles while shaping crown when there are too few sts to fit on circular needle.

HAT

Beginning at lower edge, using MC, cast on 72 (80, 88) sts. Join, being careful not to twist sts; place a marker (pm) for beginning of round.

Continuing with MC, knit 5 rounds, purl 1 round (turning round), knit 4 rounds.

Change to A; knit 1 round.

Change to MC; knit 1 round.

Establish Pattern: Begin working from chart, changing colors as indicated; work Rounds 1 – 12.

Change to MC on all sts; knit 1 round.

Change to A; knit 1 round.

Change to MC; knit 2 (4, 6) rounds, pm every 18 (20, 22) sts on last round.

Shape Crown

Beginning this round, dec 4 sts evenly every other round 13 (15, 17) times as follows: K2tog, [work to next marker, k2tog] 3 times, work to end—20 sts remain.

Knit 1 round even.

Decrease 10 sts evenly around by k2tog around—10 sts remain.

Cut yarn, leaving a 10" tail. Using yarn needle and tail, thread tail through remaining sts; pull together to close top of Hat. Fasten off securely; do NOT cut tail.

FINISHING

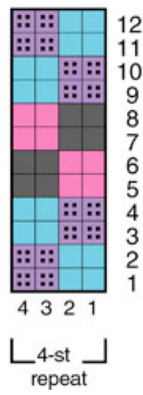
Using yarn needle, weave in all ends.

Facing: Turn lower edge to WS along turning round; stitch neatly in place, being careful not to work too tightly.

Pompon:

Using Pompon Maker or piece of cardboard and A, B and C, make a large Pompon (see photo). Attach Pompon to Crown of Hat using tail left from finishing Crown of Hat. Trim ends, if desired.

FAIR ISLE CHART



KEY

Knit every round in colors indicated.

- Black (MC)
- Watermelon (A)
- Blue Mint (B)
- Grape (C)

|| Yarns || Free Projects || Where to Buy || Links || Learning || Contact Us || Caron Connections || News ||
Latch Hook ||

Visit Bond America online

©2008 Caron International