



Subscribe to Caron Connections, our free e-newsletter.

Enter your e-mail address

Subscribe

[yarn](#) [free projects](#) [where to buy](#) [links](#) [learning](#) [contact us](#) [caron connections](#) [news](#) [latch hook](#) [blog](#)

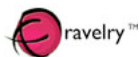


- Caron Yarns
- Simply Soft®
- Simply Soft® Brites
- Simply Soft® Chunky **NEW**
- Simply Soft® Collection **NEW**
- Simply Soft® Eco
- Simply Soft® Heather
- Simply Soft® Paints
- Simply Soft® Party **NEW**
- Simply Soft® Shadows
- Craft & Rug Yarn
- Dazzleaire **NEW**
- Natura®
- One Pound
- Wintuk®



Check out our newest yarns!

- Caron Latch Hook Kits
- Caron® Classics
- Natura®
- WonderArt®



Winter Posies Lap Robe

with



designed by Andrea Graciarena



TECHNIQUE USED: Crochet



SIZE: One size

FINISHED MEASUREMENTS

Throw measures approximately 35 1/2"/90cm wide by 47"/119.5cm long

MATERIALS

[Buy Now](#)

[Caron International's Simply Soft](#)

(100% Acrylic):

15 oz (A), 15 oz (B)

Shown in: #9759 Ocean (A); #9761

Plum Perfect (B)

[Buy Now](#)

[One size US I-9 \(5.5 mm\)](#) or size

needed to obtain gauge

Yarn needle

GAUGE

In pattern, 3 posies and 10 rows = 7"/18cm.

STITCHES USED

Chain (ch), double crochet (dc), single crochet (sc), slip stitch (sl st)

SPECIAL TERMS



click images to enlarge

stitch chart

[Printer Friendly PDF](#)

[SHARE](#) [f](#) [t](#) [e](#) ...

Cl: Cluster—Yarn over, insert hook in indicated stitch or space and draw up a loop, yarn over and draw through 2 loops on hook; yarn over, insert hook in *same* stitch or space and draw up a loop, yarn over and draw through 2 loops on hook; yarn over and draw through all 3 loops on hook.

Fl-center: Flower center—Turn, dc in last ch-3 sp made, turn.

Hdc Fl-center: Half double crochet flower Center—Turn, hdc in last ch-3 sp made, turn.

shell: ([Cl, ch 2] 3 times, Cl) in indicated space.

half-shell: (Cl, ch 2, Cl) in indicated space.

NOTES

1. The color is changed every two rows.
2. To change color, work last stitch of old color to last yarn over, yarn over with new color and draw through all loops on hook to complete stitch. Drop old color, continue work with new color. You may fasten off old color (recommended for B) or carry it loosely up the side of the piece. If you choose to carry unused colors up side of piece, take care to cover these strands when working the border.

THROW

With A, ch 186.

Row 1: Sc in 6th ch from hook (beginning ch counts as first ch-2 sp), *ch 2, sk next 2 ch, sc in next ch; repeat from * across, turn—61 ch-2 sps.

Row 2: Ch 4 (counts as dc, ch 1 here and throughout), half-shell in first ch-2 sp, ch 1, sk next ch-2 sp, sc in next sc, ch 1, sk next ch-2 sp, *shell in next ch-2 sp, ch 1, sk next ch-2 sp, sc in next sc, ch 1, sk next ch-2 sp; repeat from * across to last ch-2 sp, half-shell in last ch-2 sp, ch 1, dc in 3rd ch of beginning ch; change to B in last st, turn—19 shells and 1 half-shell at each end.

Row 3: With B, ch 1, sc in first dc, ch 3, Cl in next Cl, sk next ch-2 sp, Cl in next Cl, sk next sc, Cl in next Cl, sk next ch-2 sp, Cl in next Cl; turn, dc in last ch-3 sp made, turn (Fl-center made); *ch 3, sc in next ch-2 sp, ch 3, Cl in next Cl, sk next ch-2 sp, Cl in next Cl, sk next sc, Cl in next Cl, sk next ch-2 sp, Cl in next Cl; Fl-center; repeat from * across to turning ch, ch 3, sc in 3rd ch of turning ch, turn—20 groups of 4 Cl each.

Row 4: Ch 1, sc in first sc, *ch 1, sk next ch-3 sp, shell around post of next Fl-center, ch 1, sk next ch-3 sp, sc in next sc; repeat from * across; change to A in last st, turn—20 posies.

Row 5: With A, ch 3, Cl in next Cl, sk next ch-2 sp, Cl in next Cl; turn, hdc in last ch-3 sp made, turn (Hdc Fl-center made); ch 3, *sc in next ch-2 sp, ch 3, Cl in next Cl, sk next ch-2 sp, Cl in next Cl, sk next sc, Cl in next Cl, sk next ch-2 sp, Cl in next Cl; Fl-Center; ch 3, sc in next ch-2 sp; repeat from * across to last 2 Cl, ch 3, Cl in next Cl, sk next ch-2 sp, Cl in next Cl; Hdc Fl-center; sk last ch-1 sp, dc in last sc, turn.

Row 6: Ch 4, half-shell around post of next Hdc Fl-center, ch 1, sk next ch-3 sp, sc in next sc, ch 1, sk next ch-3 sp, *shell around post of next Fl-center, ch 1, sk next ch-3 sp, sc in next sc, ch 1, sk next ch-3 sp; repeat from * across to last Hdc Fl-center, half shell around post of next Hdc Fl-center, ch 1, dc in top of turning ch; change to B in last st, turn.

Rows 7–46: Repeat Rows 3–6 ten times,

Rows 47–49: Repeat Rows 3–5 once more.

Row 50: Ch 3, sc in base of first Hdc Fl-center (at base of the hdc), ch 2, sk next ch-3 sp, sc in next sc, *ch 2, sk next ch-3 sp, sc in top of

next FI-center (in top of the dc), ch 2, sc in base of same FI-center, ch 2, sk next ch-3 sp, sc in next sc; repeat from * across to last Hdc FI-center, ch 2, sk next ch-3 sp, sc in top of last Hdc FI-center, ch 2, sc in top of turning ch, turn—61 ch-2 sps. Do not fasten off.

Edging

Round 1: Work with A,

work across last row: Sl st in ch-2 sp (corner), (ch 2, dc, ch 2, Cl) in same corner ch-2 sp, ch 1, sk next ch-2 sp, sc in next sc, ch 1, sk next ch-2 sp, *working over next ch-2 sp, shell around post of next FI-center, ch 1, sk next ch-2 sp, sc in next sc, ch 1, sk next ch-2 sp; repeat from * to next corner, ([Cl, ch 2] 5 times, Cl) in next corner ch-sp;

work across side edge: working in ends of rows, ch 1, 2 sc in first ch of corner ch-sp, ch 2, **shell in end of next dc row, ch 1, sc in end of next 2 sc rows, ch 1; repeat from ** across to next corner (last dc row), ([Cl, ch 2] 5 times, Cl) in next corner ch-2 sp (end of last dc row);

work across opposite side of foundation ch: ch 1, sk next ch-2 sp, sc in next sc, ch 1, sk next ch-2 sp, ***shell in next ch-2 sp, ch 1, sk next ch-2 sp, sc in next sc, ch 1, sk next ch-2 sp; repeat from * across to next corner, ([Cl, ch 2] 5 times, Cl) around post of dc at corner;

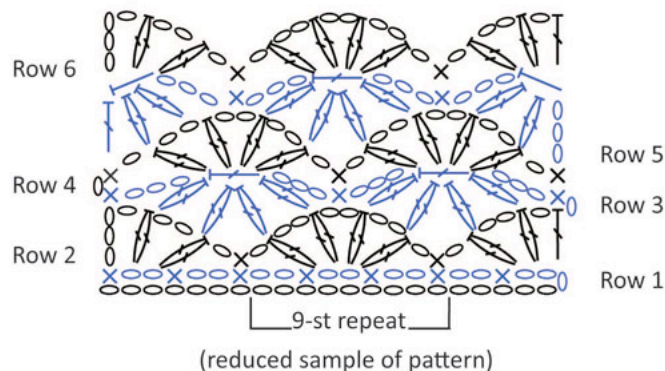
work across other side edge: work same as first side edge to first corner, shell in beginning corner ch-2 sp, ch 2; join with sl st in first dc. Fasten off.

FINISHING

Using yarn needle, weave in ends. Pin throw to measurements, spray-block and allow to air dry.

Diagram Key

- = Chain
- ⊕ = single crochet (sc)
- ┆ = half double crochet (hdc)
- ┆ = double crochet (dc)
- ⌘ = 2-dc cluster



|| Yarns || Free Projects || Where to Buy || Links || Learning || Contact Us || Caron Connections || News || Latch Hook ||

Visit Bond America online

©2011 Caron International