



**CARON**



Subscribe to Caron Connections, our free e-newsletter.

Enter your e-mail address

[yarn](#) [free projects](#) [where to buy](#) [links](#) [learning](#) [contact us](#) [caron connections](#) [news](#) [latch hook](#) [blog](#)



...click for free patterns and more!

**Yarns**

- [stitch.rock.love](#)
- [Sheep\(ish\) \*\*NEW\*\*](#)
- [Simply Soft®](#)
- [Simply Soft® Chunky \*\*NEW\*\*](#)
- [Simply Soft® Eco](#)
- [Simply Soft® Heather](#)
- [Simply Soft® Paints](#)
- [Simply Soft® Party \*\*NEW\*\*](#)
- [Simply Soft® Shadows](#)

**Craft & Rug Yarn**

[Dazzleaire \*\*NEW\*\*](#)

[Natura®](#)

[One Pound](#)



(Check out our newest yarns!)

**Tulip® Hooks & Needles**

- [Tulip/Etimo Crochet Hooks](#)
- [Tulip Knitting Needles](#)

**Caron Latch Hook Kits**

- [Caron® Classics](#)
- [Natura®](#)
- [WonderArt®](#)



## Toggle Jacket

with  
**SIMPLY SOFT**

designed by Lisa Gentry  
**TECHNIQUE USED:** Knit



**SIZES**

Small (Medium, Large, 1X, 2X)

**FINISHED MEASUREMENTS**

**Bust:** 36 (39 ½, 42, 45, 48)"/91.5 (100.5, 106.5, 114.5, 122)cm

**Length:** 20 ½ (21, 22, 22 ½, 23)"/52 (53.5, 57, 58.5)cm

**MATERIALS**

[Caron International's Simply Soft](#) (100% Acrylic)

Shown in: #0003 Wheat, 15 (20, 20, 20, 25)oz/425 (567, 567, 567, 708)g

One size U.S.8 (5mm) circular knitting needle, 36"/91.5cm long, or size to obtain gauge

- Stitch holders
- 4 stitch markers
- 2 buttons 1"/2.5cm round
- Yarn needle

**GAUGE**

In St st, using size U.S. 8 (5mm) needle, 17 sts and 24 rows = 4"/10cm

**SPECIAL TERMS**

sk2p: slip 1, knit 2 stitches together, pass slipped stitch over (= double dec)

k2tog: knit 2 stitches together

ssk: slip 1 knitwise, knit next stitch, pass slipped stitch over



[click image to enlarge](#)

[chart](#) | [schematic](#)



**Revised 8/4/11**



Tbl: through back loop

Yo: yarn over

#### STITCHES USED

**Stockinette stitch (St st):**

Knit on RS, purl on WS

**Lace Pattern (multiple of 11 sts):**

**Row 1 (RS):** \*Ssk, yo, k7, yo, k2tog; rep from \*.

**Rows 2 and 4 (WS):** P all sts.

**Row 3:** \*Ssk, yo, k1, ssk, yo, [k1, yo, k2tog] 2 times; rep from \*.

**Row 5:** \*Ssk, yo, k2, yo, sk2p, yo, k2, yo, k2tog ; rep from \*.

**Row 6:** P all sts.

Rep Rows 1-6 for Lace patt.

#### NOTES

Jacket is worked back and forth on a circular needle in one piece from the neck down.

#### JACKET

##### Neckband

CO 90(90, 101, 101, 112) sts.

**Row 1 (WS):** K all sts.

**Row 2 (RS):** K1, [work Lace patt Row 1 on 11 sts] 8 (8, 9, 9, 10) times, k1.

**Row 3:** P1, [continue Lace patt on 11 sts] 8 (8, 9, 9, 10) times, p1.

**Rows 4-13:** Work first st and last st in St st and continue in Lace patt on center 88 (88, 99, 99, 110) sts.

**Row 14:** K1, continue Lace patt on 11 sts, k across to last 12 sts inc 2 (8, 3, 9, 4) sts evenly spaced, continue Lace patt on next 11 sts, k1—92 (98, 104, 110, 116) sts.

##### Body

**Note:** for front bands continue over first and last 12 sts as established and in St st between front bands.

**Row 1 (WS):** P12 (13, 14, 15, 16), yo, p1, place marker (pm) for left front, p1, yo, p16 (17, 18, 19, 20), yo, p1, pm for sleeve, p1, yo, p28 (30, 32, 34, 36), yo, p1, pm for back, p1, yo, p16 (17, 18, 19, 20), yo, p1, pm for sleeve, p1, yo, p12 (13, 14, 15, 16) for right front (8 sts inc'd)--100 (106, 112, 118, 124) sts.

**Row 2 and all RS rows:** Continue front bands as established in patt, k sts between front bands, k yo's from back.

**Row 3:** Slipping markers, p13 (14, 15, 16, 17), yo, p2, yo, p18 (19, 20, 21, 22), yo, p2, yo, p30 (32, 34, 36, 38), yo, p2, yo, p18 (19, 20, 21, 22), yo, p2, yo, p13 (14, 15, 16, 17)--108 (114, 120, 126, 130) sts.

Continue in St st, working yo before and after marked k1 st as est on every WS row 24 (26, 28, 30, 32) times more (a total of 26 [28, 30, 32, 34] times), ending with a WS row--300 (322, 344, 366, 388) sts.

##### Divide For Body

**Row 1 (RS):** K37 (40, 43, 46, 49) sts for right front, BO next 4 sts (2 sts before and after marker), k66 (71, 76, 81, 86) sts for sleeve and slip sleeve sts on a holder, BO next 4 sts (2 sts before and after marker), k78 (84, 90, 96, 102) sts for back, BO next 4 sts (2 sts before and after marker), k66 (71, 76, 81, 86) sts for sleeve and slip sleeve sts on a holder, BO next 4 sts (2 sts before and after marker), k37 (40, 43, 46, 49) sts for left front.

**Next Row (WS):** Purl across all sts on needle, joining left front, back and right front sections – 152 (164, 176, 188, 200) sts.

Work in St st until piece measures 6" from underarm, ending with a RS row.

Work next 36 rows in Lace patt, ending with patt Row 6.

Knit next 2 rows. BO.

#### SLEEVES

Slip 66 (71, 76, 81, 86) sts from one holder to larger needle. Work back and forth in St st until sleeve measures 4 ½ (5, 5 ½, 6)" from

underarm, ending with a RS row.

**Row 1 (WS):** P across and inc (dec, inc, dec, inc) evenly spaced 2 (3, 3, 2, 4) sts—68 (68, 79, 79, 90) sts.

**Row 2 (RS):** K1, [work Lace patt Row 1 on 11 sts] 6 (6, 7, 7, 8) times, k1.

**Row 3:** P 1, [continue Lace patt on 11 sts] 6 (6, 7, 7, 8) times, p1.

**Rows 4-17:** Work first and last st in St st and continue Lace patt on center 55 (55, 77, 77, 88) sts.

**Rows 18-19:** Knit.

BO.




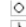


**FINISHING**

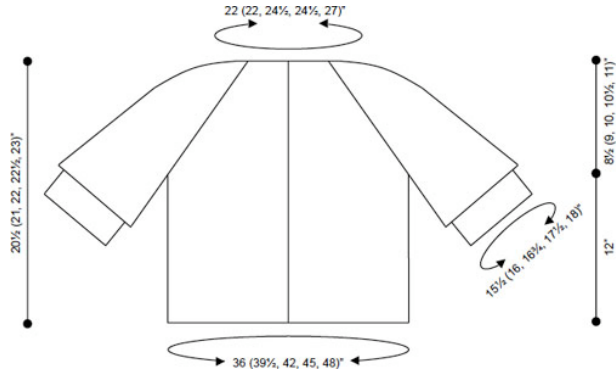
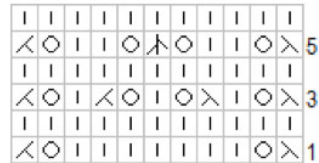
Sew sleeve and underarm seams.

Sew buttons on left front using Lace patt for buttonholes.

Using yarn needle, weave in ends.

**Stitch Key**

-  **Stockinette Stitch:** Knit 1 (k) on right side rows, purl 1 (p) on wrong side rows.
-  **Reverse Stockinette Stitch:** Purl 1 on right side rows, knit 1 on wrong side rows.
-  **k2tog:** Knit 2 stitches together.
-  **ssk:** Slip 1, knit 1, pass slipped stitch over.
-  **yo:** Yarn over needle.
-  **sk2p:** Slip next stitch ~~purlwise~~, knit 2 together, pass slipped stitch over.



|| Yarns || Free Projects || Where to Buy || Links || Learning || Contact Us || Caron Connections || News || Latch Hook ||

Visit Bond America online

©2011 Caron International